

# CAT® C3.6

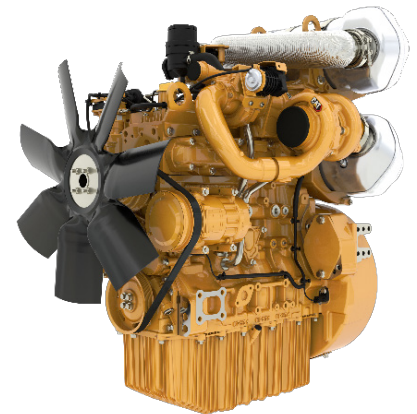
U.S. EPA TIER 4 FINAL / EU STAGE V

129 KW (173 HP) @ 2200 RPM



INDUSTRIAL

The Cat® C3.6 packs big engine capability into a compact package, delivering up to 129 kW (173 hp) of power and 740 Nm (546 lb ft) of torque. Engineered to meet global emissions standards, it integrates seamlessly into your machine. With extended service intervals, flexible fuel options, and the proven durability expected from Cat engines, the C3.6 is built to keep your machines running strong, day after day.



## FEATURES AND BENEFITS

### BIG ENGINE PERFORMANCE

A compact design that delivers big-engine performance without giving up valuable space. Ideal for tight installations, it brings flexibility across machine platforms while reducing weight and complexity—giving you more usable power in a smaller footprint.

### STRONG, CONSISTENT OUTPUT

With up to 129 kW (173 hp) of power and 740 Nm (546 lb ft) of torque, the engine delivers strong, consistent output with optimized fuel use. The engine-mounted aftertreatment keeps customers installations simple while maintaining the high performance and efficiency needed for demanding work.

### LONG-TERM VALUE

Service intervals of up to 1,000 hours help cut downtime and reduce operating costs. Customizable options and easy integration across platforms provide the versatility and long-term value customers expect from Cat.

### RELIABLE, SUSTAINABLE PERFORMANCE

Built on the proven C3.6 platform, this engine is designed to perform in extreme cold, high altitudes, and tough operating conditions. Compatible with B20 biodiesel and HVO fuels, it delivers reliable, sustainable performance—without compromise.

## SPECIFICATION

Cylinders	4
Displacement, litres (in <sup>3</sup> )	3.6 (221)
Aspiration	Twin turbocharged aftercooled
Bore and stroke, mm (in)	98 x 122 (3.9 x 4.8)
Maximum torque, Nm (lb ft) @ rated speed, rpm	740 (546) @ 1500
Combustion system	Direct injection
Compression ratio	17:01
Aftertreatment	DOC/DPF/SCR
Total lubricating oil capacity, litres (US gal)	16 (4.2)
Rotation (viewed from flywheel)	Anti-clockwise
Length x width x height, mm (in)	850 x 680 x 1060 (33.5 x 26.8 x 41.8)
Weight, kg (lb)	400 (882), dry 425 (937), wet

For additional information on all your power requirements, visit [www.cat.com/industrial](http://www.cat.com/industrial)

All information in this document is substantially correct at time of printing and may be altered subsequently. Photographs are for illustrative purposes only and may not reflect final specification. Final weight and dimensions will depend on completed specification. Information subject to selected configuration, and subject to change without notice. Engine power measured per ISO 14396:2002

AEXJ0183-02 (06-26)

© Caterpillar. All Rights Reserved. CAT, CATERPILLAR, LET'S DO THE WORK, their respective logos, "Caterpillar Corporate Yellow", the "Power Edge" and Cat "Modern Hex" trade dress as well as corporate and product identity used herein, are trademarks of Caterpillar and may not be used without permission.

# CAT® C3.6

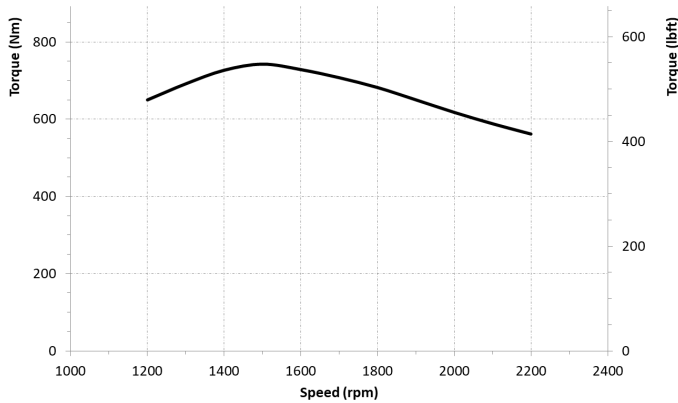
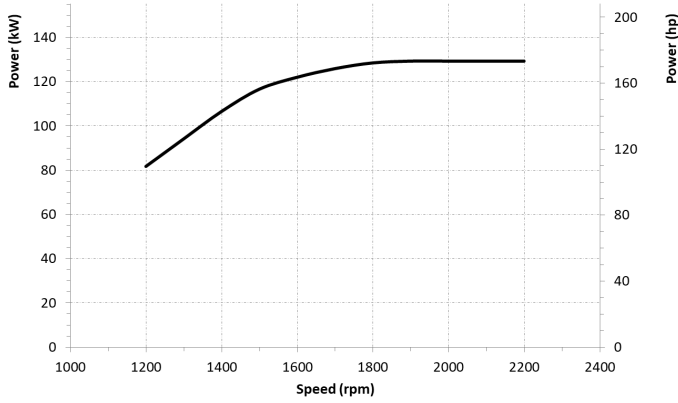
U.S. EPA TIER 4 FINAL / EU STAGE V

129 KW (173 HP) @ 2200 RPM

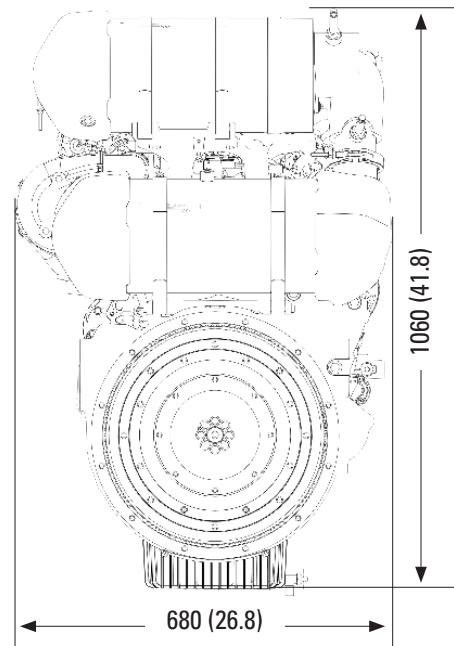
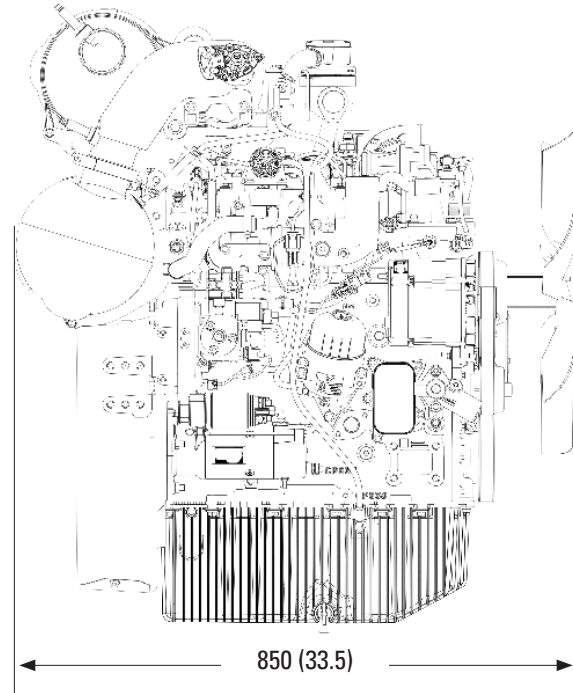


INDUSTRIAL

## PERFORMANCE CURVES



## DIMENSIONS



For additional information on all your power requirements, visit [www.cat.com/industrial](http://www.cat.com/industrial)

All information in this document is substantially correct at time of printing and may be altered subsequently. Photographs are for illustrative purposes only and may not reflect final specification. Final weight and dimensions will depend on completed specification. Information subject to selected configuration, and subject to change without notice. Engine power measured per ISO 14396:2002

AEXJ0183-02 (06-26)

© Caterpillar. All Rights Reserved. CAT, CATERPILLAR, LET'S DO THE WORK, their respective logos, "Caterpillar Corporate Yellow", the "Power Edge" and Cat "Modern Hex" trade dress as well as corporate and product identity used herein, are trademarks of Caterpillar and may not be used without permission.